



**Légende**

- Périmètre du SAGE
- Villes
- Manche
- Limites départementales
- Réseau hydrographique

**Masses d'eau de surface**

Masses d'eau de transition et côtière

- Baie de Somme
- Warenne - Ault

Masses d'eau continentales

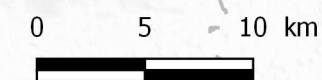
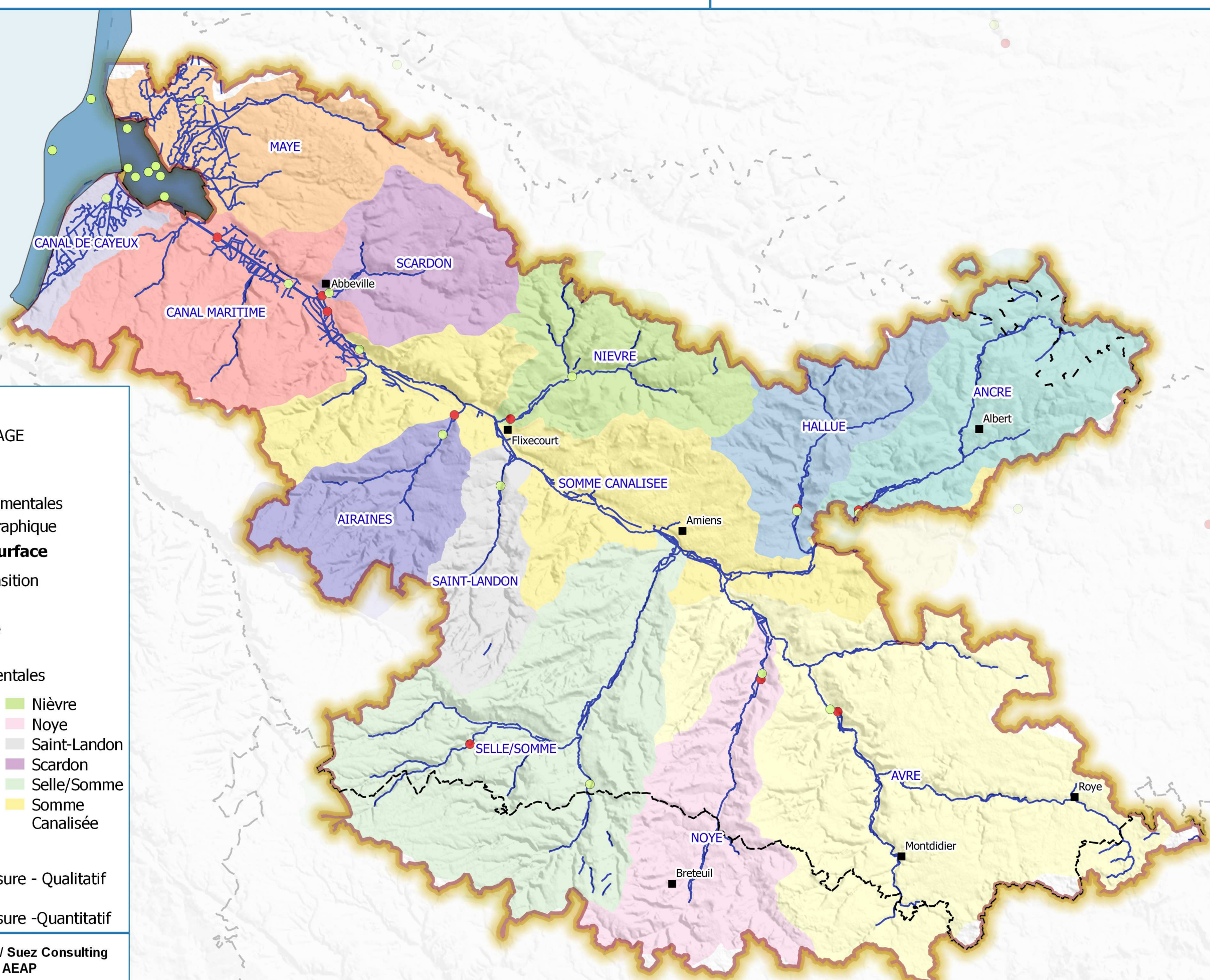
<span style="display: inline-block; width: 15px; height: 10px; background-color: purple; margin-right: 5px;"></span> Airaines	<span style="display: inline-block; width: 15px; height: 10px; background-color: lightgreen; margin-right: 5px;"></span> Nièvre
<span style="display: inline-block; width: 15px; height: 10px; background-color: teal; margin-right: 5px;"></span> Ancre	<span style="display: inline-block; width: 15px; height: 10px; background-color: pink; margin-right: 5px;"></span> Noye
<span style="display: inline-block; width: 15px; height: 10px; background-color: yellow; margin-right: 5px;"></span> Avre	<span style="display: inline-block; width: 15px; height: 10px; background-color: lightgrey; margin-right: 5px;"></span> Saint-Landon
<span style="display: inline-block; width: 15px; height: 10px; background-color: lightpurple; margin-right: 5px;"></span> Canal de Cayeux	<span style="display: inline-block; width: 15px; height: 10px; background-color: purple; margin-right: 5px;"></span> Scardon
<span style="display: inline-block; width: 15px; height: 10px; background-color: lightcoral; margin-right: 5px;"></span> Canal Maritime	<span style="display: inline-block; width: 15px; height: 10px; background-color: lightgreen; margin-right: 5px;"></span> Selle/Somme
<span style="display: inline-block; width: 15px; height: 10px; background-color: lightblue; margin-right: 5px;"></span> Hallue	<span style="display: inline-block; width: 15px; height: 10px; background-color: yellow; margin-right: 5px;"></span> Somme Canalisée
<span style="display: inline-block; width: 15px; height: 10px; background-color: orange; margin-right: 5px;"></span> Maye	

**Réseau de suivi**

- Stations de mesure - Qualitatif (RCS et RCO)
- Stations de mesure - Quantitatif

EPTB Somme - Ameva / Suez Consulting  
IGN, SRTM, AEAP

PAGD / Règlement - Mars 2018



Echelle : 1/350 000 (format A3)